

TIME TRAVEL ABOARD DANVILLE DEPOT.

TIME TABLE:

2021.	Plates 2 & 3
Circa 1994.	Plate 4
Circa 1984.	Plate 4
Circa 1976.	Plate 5
Circa 1954.	Plate 6
Circa 1948.	Plate 7
Circa 1916.	Plates 8, 9, & 10
Circa 1907.	Plate 11
Circa 1905.	Plate 12

Conrad Ross Meaders

XXMMI.



North Elevation.



East Elevation.



West Elevation.



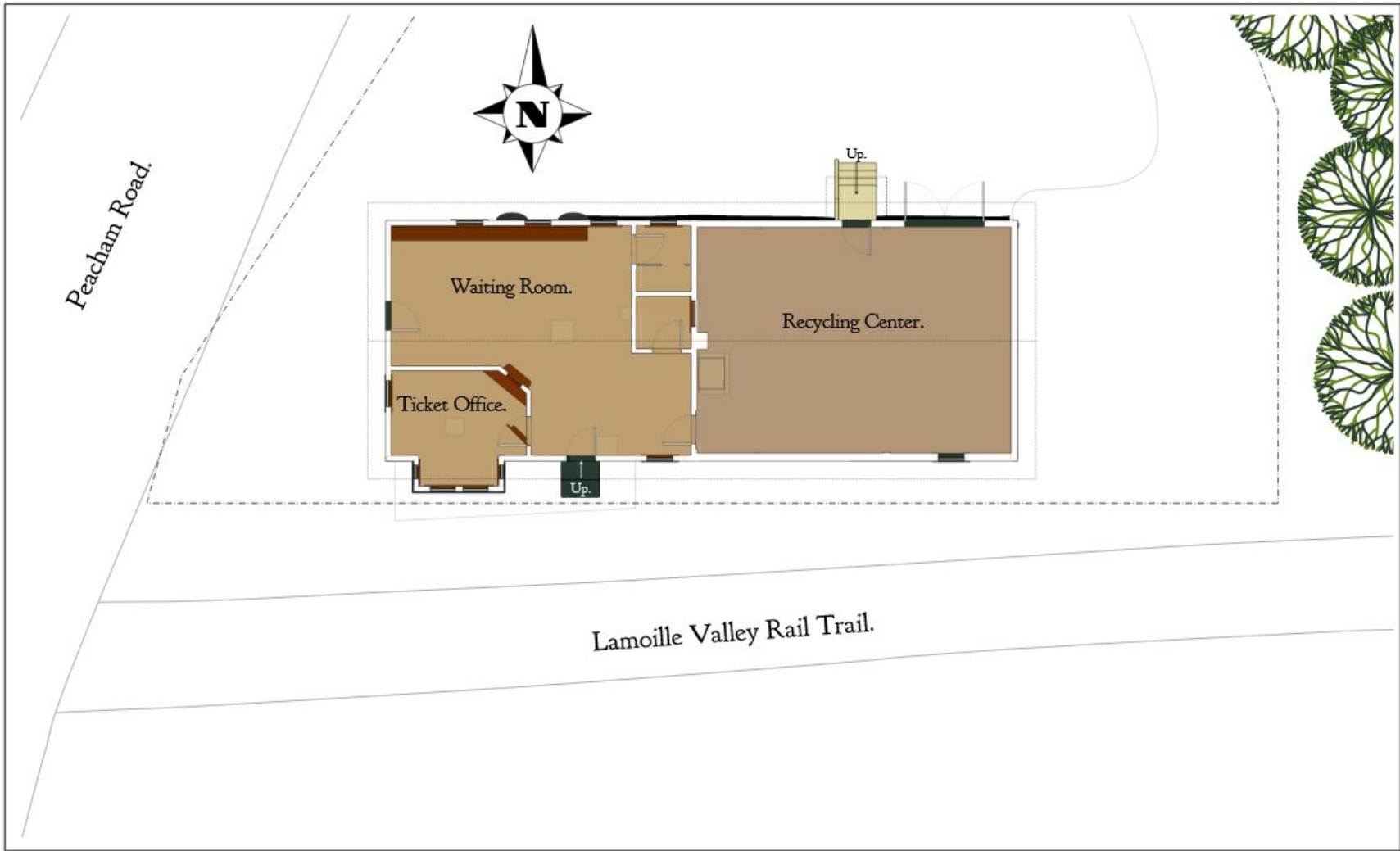
South Elevation.

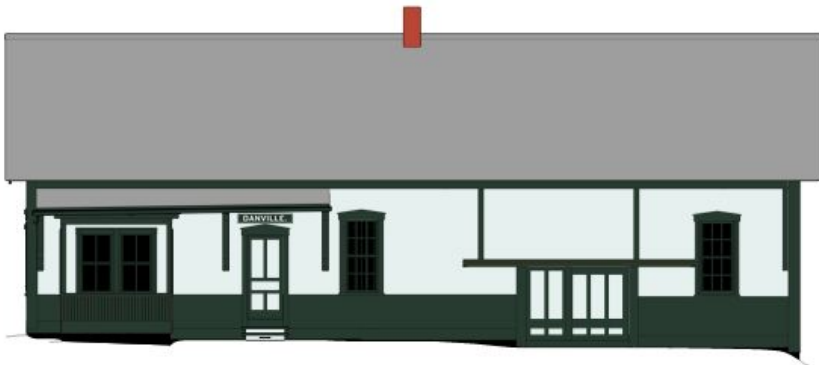
Danville Depot 2021.

Conrad Ross Meaders
Spring 2022

Scale: 1/16" = 1'

2
12





Circa 1994 South Elevation.



Train Station, Danville.

-Preservation Trust of Vermont 1994.



Danville Depot around 1984.

-The Caledonian-Record.



Circa 1984 South Elevation.

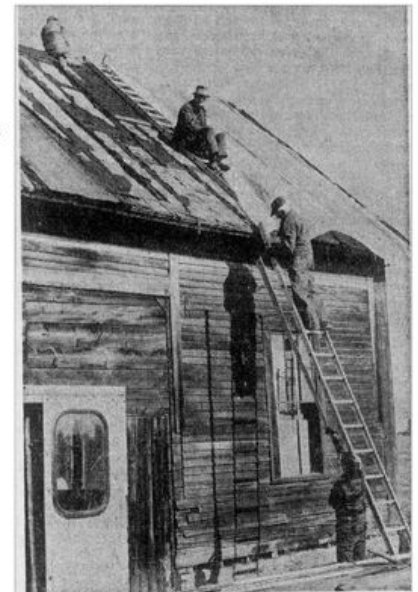


Danville Depot shortly after the 1976 renovation.
-Danville Historical Society

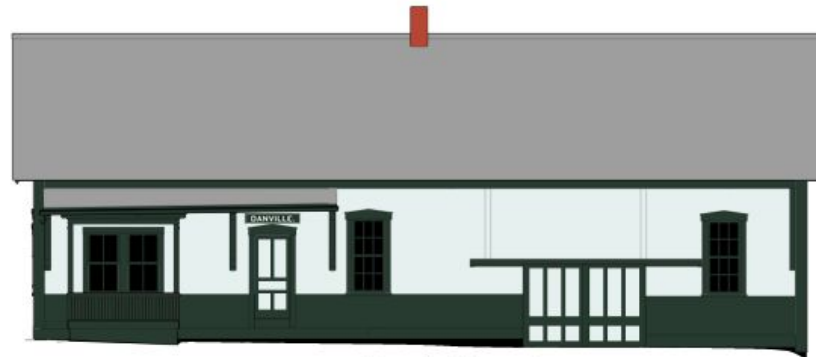


Above: Danville Depot some time before the 1976 renovation.
-Danville Historical Society

Right: Newspaper clipping mentioning volunteer efforts.
-Danville Historical Society



Volunteers work to put plastic over the roof of the old railroad station in Danville Saturday morning in hopes of a possible restoration project for the bicentennial celebration in 1976. The plastic was put up to stop leakage until money can be found to give the roof the necessary repairs. The proposed 1976 transportation plan of the Vt. Bicentennial Commission includes a route that would run by the old Danville station.



South Elevation.

Danville Depot Circa 1976.

Conrad Ross Meaders
Spring 2022

Scale: 1/16" = 1'

5
12



STATION AGENT RETIRES—Perley J. Pressey is shown sending one of his final messages by telegraph from the Danville railroad station before retiring today. He's been a telegrapher since boyhood and prefers no other means of communication for railroad work. (Wm. H. Jenks Photo, Danville)

Station Agent Retires.
-The Caledonian-Record.
May 27th 1954



ST. J. & L.C. R. R. STATION
DANVILLE, VERMONT

ST. J. & L.C. R. R. Station.
- Danville Historical Society.



Perley J Pressey on the
Platform in front of Danville
Depot.
- The Archie Prevost Collection.



South Elevation.

Danville Depot Circa 1954.

Conrad Ross Meaders
Spring 2022

Scale: 1/16" = 1'

6
12



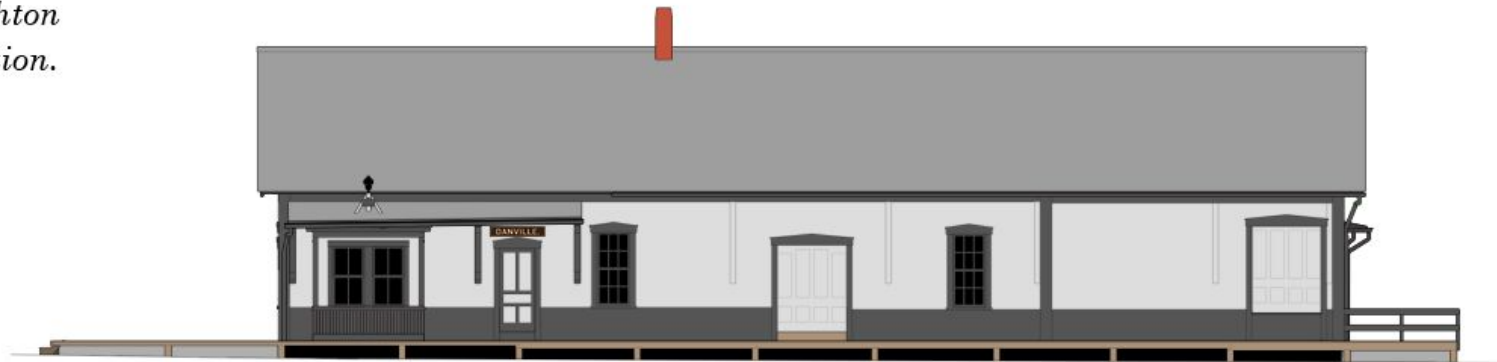
*Eunice Peck Brown,
Beulah Bigelow
Hutchinson, Lorraine
Devenger Houghton,
and unidentified girl
at Danville Railroad
Station
- Patty Houghton
Conly Collection.*



Danville Depot.
- Danville Historical Society.



*ST. J. & L.C. R.R. STATION
DANVILLE, VERMONT*
ST. J. & L.C. R.R. Station.
- Danville Historical Society.



South Elevation.

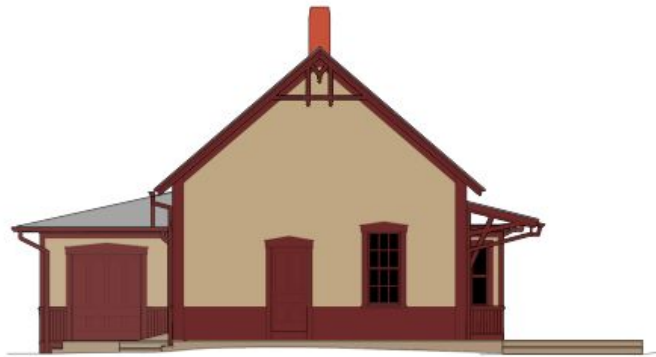
Danville Depot Circa 1948.

Conrad Ross Meaders
Spring 2022

Scale: 1/16" = 1'

7
12

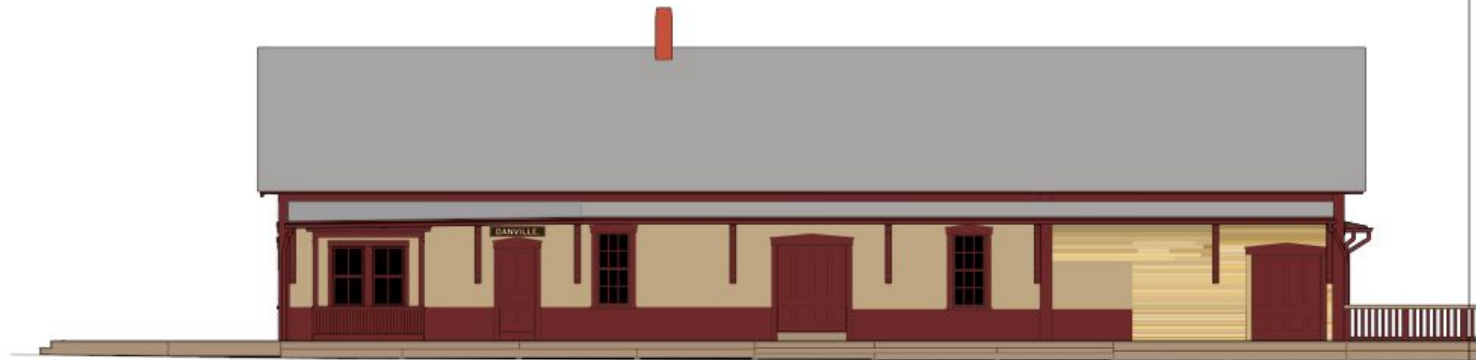
The platform curved along the railbed. According to the 1916 Interstate Commerce Commission drawings, the platform's railside edge was 2' 6" from the center of the closest rail, and the deck of the platform was 18" from the ground; although, based on contemporary photographs, the platform appears to have had a gradual height reduction from east to west in front of the station along a gradual incline.



West Elevation.



This *Danville VT.* postcard gives us a glimpse of Danville Depot around 1916.



South Elevation.

According to the 1976 Lease Agreement map, the platform extended approximately fifty feet down the trail from the southeast corner of the building.

Danville Depot Circa 1916.

Conrad Ross Meaders
Spring 2022

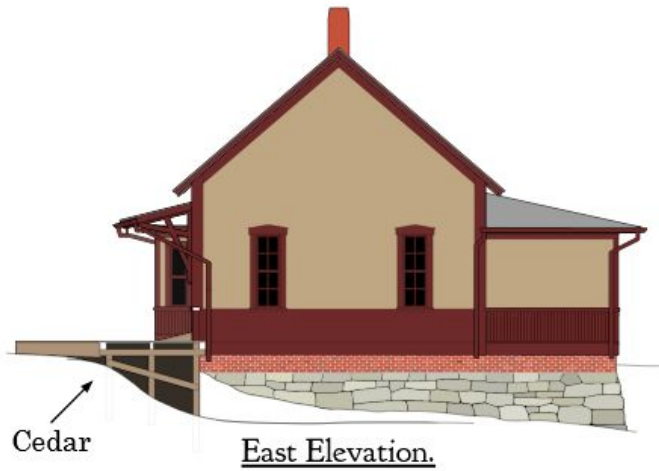
Scale: 1/16" = 1' $\frac{8}{12}$

The platform curved along the railbed. According to the 1916 Interstate Commerce Commission drawings, the platform's railside edge was 2' 6" from the center of the closest rail, and the deck of the platform was 18" from the ground; although, based on contemporary photographs, the platform appears to have had a gradual height reduction from east to west in front of the station along a gradual incline.

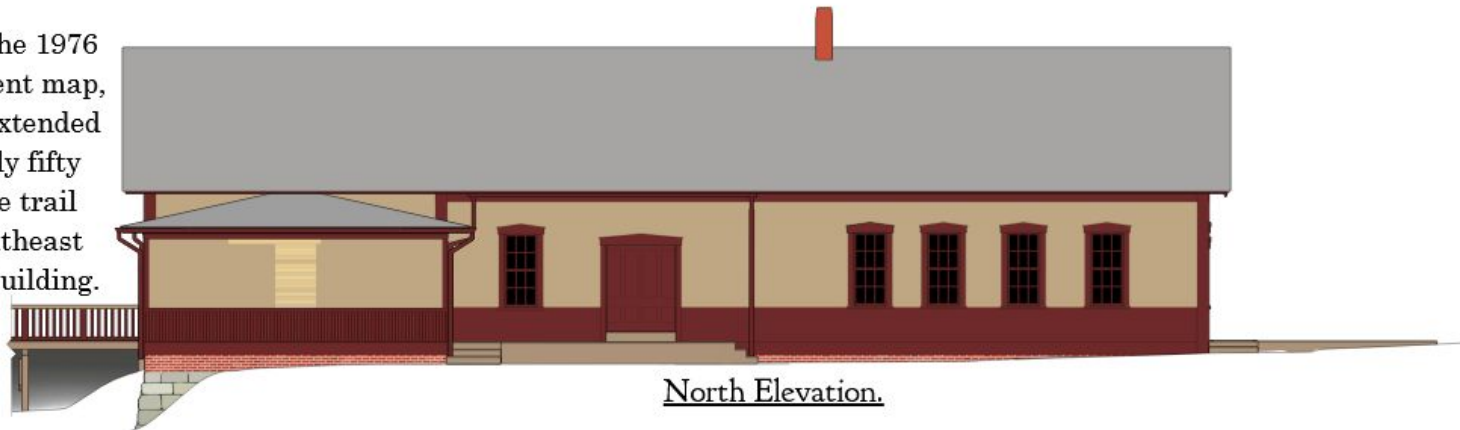


Ella Page in her horse and buggy at Danville R.R. Station.

-Danville Historical Society



According to the 1976 Lease Agreement map, the platform extended approximately fifty feet down the trail from the southeast corner of the building.

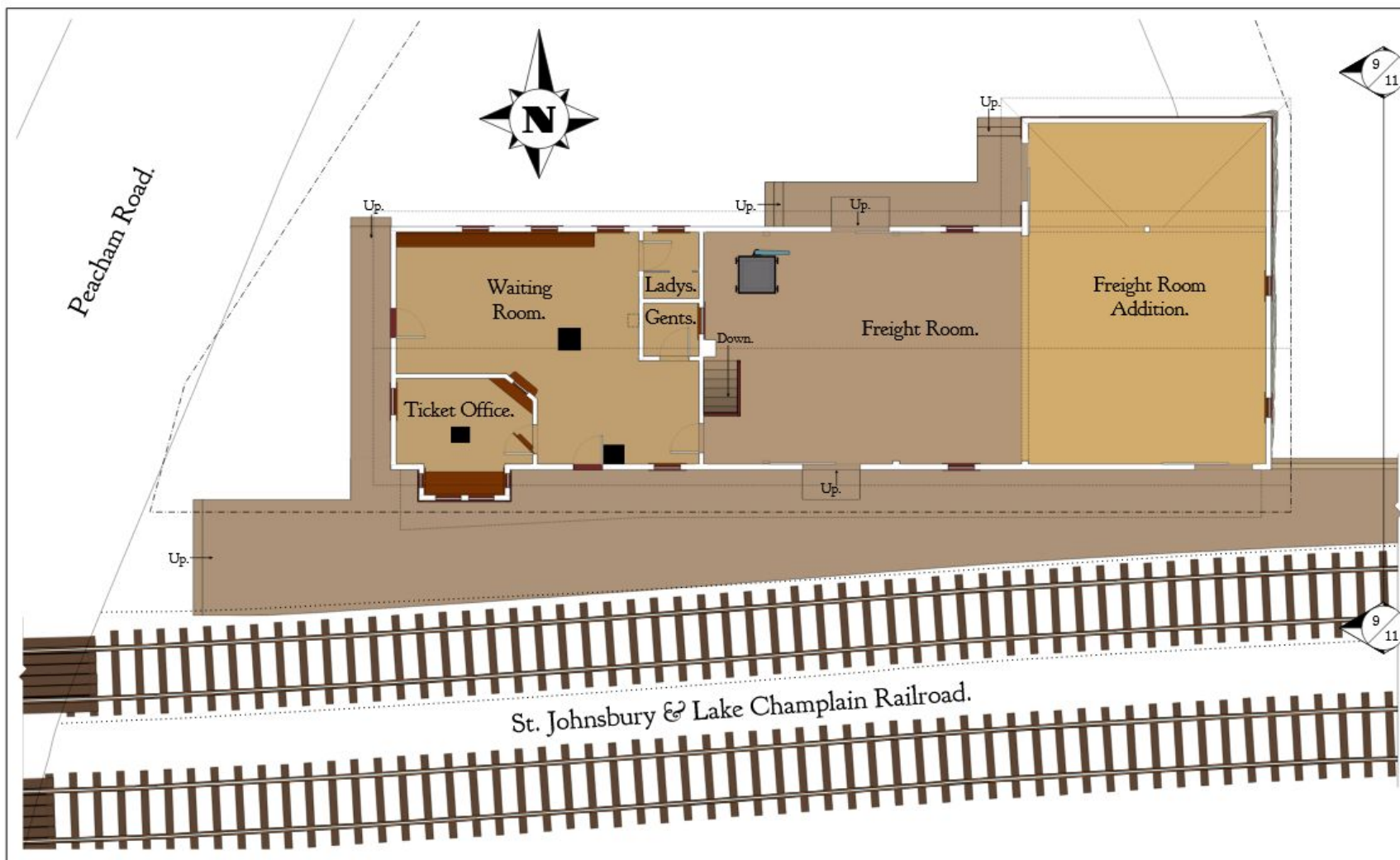


Danville Depot Circa 1916.

Conrad Ross Meaders
Spring 2022

Scale: 1/16" = 1'

9
12



The dimensions of the addition, some of the dimensions of the platform, and the placement of the north freight room door were determined using measurements from drawings commissioned by the Interstate Commerce Commission on July 10th, 1916. These drawings were published in *The St. Johnsbury and Lake Champlain Railroad Plans* by R. W. Nimke in 1994.

According to the 1976 Lease Agreement map, the platform extended approximately fifty feet down the trail from the southeast corner of the building.

**Danville Depot Floor Plan, Platforms,
and Tracks Circa 1916.**

Conrad Ross Meaders
Spring 2022

Scale: 1/16" = 1'

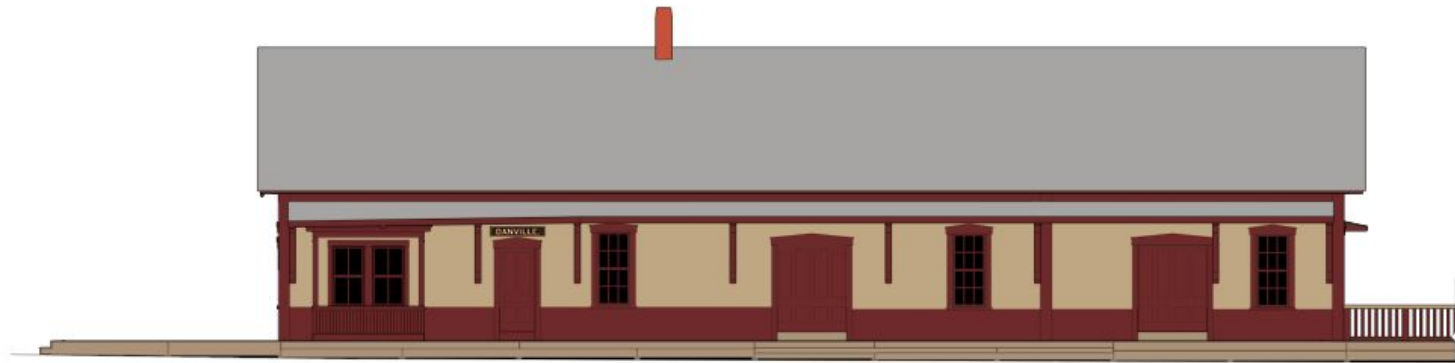
10
12



C.H. Davis with Load of Wood -1908 in Front of Danville Railroad Station. - Danville Historical Society.



The Depot Sometime After The Grand Circa 1907 Renovation. - Danville Historical Society



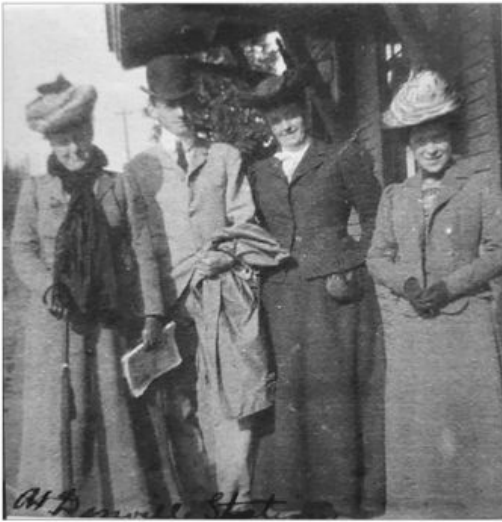
South Elevation.

Danville Depot Circa 1907.

Conrad Ross Meaders
Spring 2022

Scale: 1/16" = 1'

11
12



At Danville Station.

- Danville Historical Society.



Danville Station.

- Danville Historical Society.



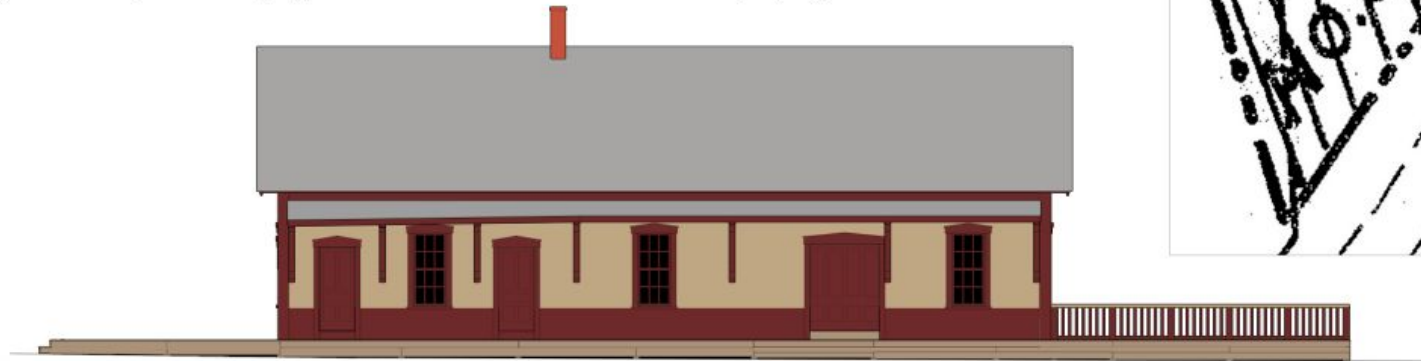
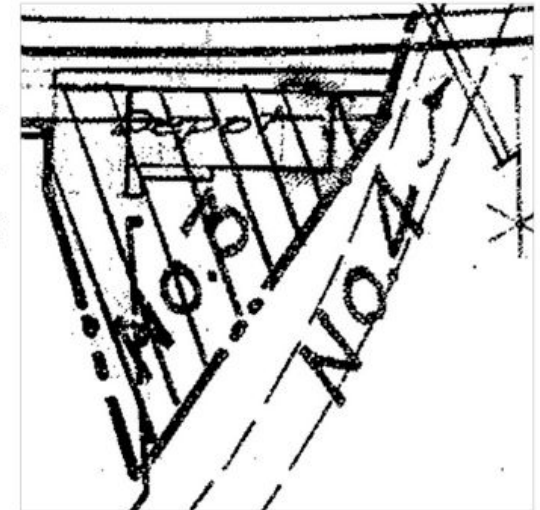
Danville Depot.

- Danville Historical Society.

To the right: a portion of, *Right-of-Way Track Map.*

Operated by the The ST J & LC R.R. Co. June 30, 1916.

According to the 1916 Interstate Commerce Commission drawings, Danville Depot had an east freight room addition; however, the 1916 Right-of-Way Track Map does not depict the addition. The former evidence suggests that the Right-of-Way Track Map depicts Danville Depot before the circa 1907 renovation with no addition and a shorter platform. This discrepancy might have occurred due to a surveyor referencing an older map or drawing of the depot. See page three of *The Details of The Depot, Special Edition* for further explanation.



South Elevation.

Danville Depot Circa 1905.

Conrad Ross Meaders
Spring 2022

Scale: 1/16" = 1'

12
12